



Project Update Seven: April 2019

Welcome to the April 2019 update of the DELWP Hume Renewable Energy Roadmap project.

The Roadmap is a 12-month project funded through the Goulburn Valley and Ovens Murray Regional Partnerships and hosted by the Department of Environment, Land, Water and Planning.

By end of July 2019 the project will be complete.

The Roadmap will represent the voice of the community, identify local barriers and issues, understand the investment potential of the region and identify community expectations of the renewable energy transition.

What's been happening with the roadmap project?

Is your business spending too much on energy? Register now for workshops - 7 May

The Roadmap is working with DELWP Business and Industry Engagement to bring free energy workshops for Hume region businesses in Wodonga and Shepparton.

Come and hear local businesses talk about what they do to reduce their energy costs, and the range of practical and technical solutions they use:

- Bioenergy
- Refrigeration solutions
- Power Purchasing Agreements
- Solar
- Environmental Upgrade Agreements
- Energy efficiency
- Replacing LPG with heat pumps
- Gas efficiencies

Wodonga

7:30 – 9:30 am

The Cube

118 Hovell Street, Wodonga

<https://energy-workshop-for-business-wodonga.eventbrite.com.au>

Shepparton

4:30 – 6:30 pm

Quality Hotel ParkLake

481 Wyndham Street, Shepparton

<https://energy-workshop-for-business-shepparton.eventbrite.com.au>

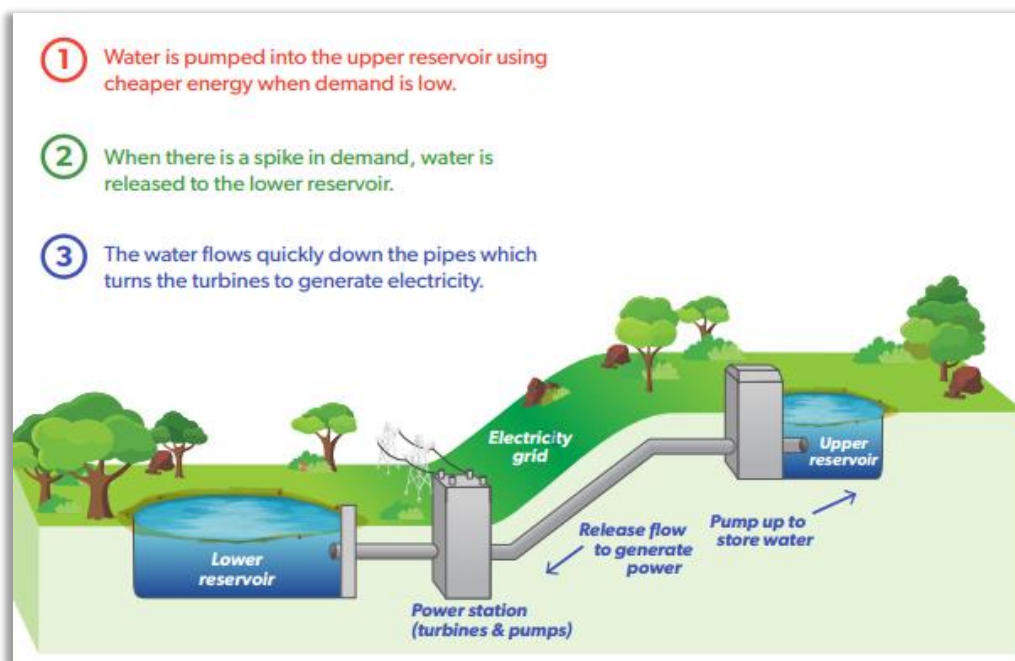
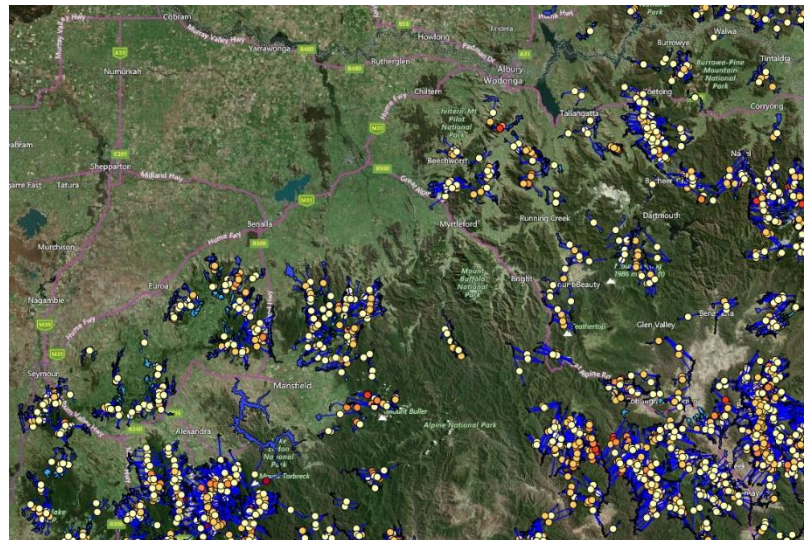


For more details, please contact Jan O'Dwyer, Business and Industry Engagement on 0402 224 506 or jan.odwyer@delwp.vic.gov.au

Pumped Hydro Electric Storage potential of our region

The Roadmap has commissioned the [100% Renewable Energy group](#) of the Research School of Electrical, Energy and Materials Engineering, Australia National University to survey the Hume region's potential to host pumped hydroelectric storage (PHES). We are starting to receive raw data and maps (see below). Contact us if you are interested in more information.

Each identified site comprises an upper and lower reservoir pair plus a hypothetical tunnel route between the reservoirs, and includes data such as latitude, longitude, altitude, head, slope, water volume, water area, rock volume, dam wall length, water/rock ratio, energy storage potential and approximate relative cost (red-least cost and yellow – high cost).



PHES is an important part of our renewable energy future providing storage solutions that can release energy to meet demand and stabilise the electricity grid.

Image from the New South Wales government [Pumped Hydro Roadmap report](#).

Community renewable energy mini grants CLOSING 14 APRIL 2019

The Roadmap and DELWP Hume region is delivering a small grants program to support conversations, awareness and activities in communities across the region about renewable

energy. Grants of between \$1,000 to \$3,000 will be awarded from available funding of \$30,000.

Projects must begin by 30 April and conclude no later than 15 July 2019.

More details and application forms and FAQ sheets can be obtained by emailing the Roadmap or by visiting the [Roadmap webpage](#).

For further information contact:

Chelsea Cherry: 0439 315 410 and chelsea.cherry@delwp.vic.gov.au

Fiona Roberts: 0436 691 476 and fiona.roberts@delwp.vic.gov.au

Wall2Wall Festival, Benalla 5-7 April

Come to Benalla's [Wall2Wall Festival](#) this weekend to check out the mural sponsored by the Roadmap and Hume DELWP. We are working with artist Tarsha Davis and Benalla P-12 students to capture young people's ideas of what the environment and world might look like if we all embrace renewable energy. Thank you to Jessica Mobourne from the Department of Education and Training for working with us in her role as Koorie Education Support Officer.

For some great background information check out the article in the [Benalla Ensign](#).

This week Tarsha and the Benalla P-12 students are working hard to bring their ideas to life.



Follow Tarsha on Instagram to view the progress of the mural IG: [@tarsha_davis_](#)

What's your renewable energy future?

Photo and video competition for young people 18 years and under



- Entries extended to 18 April
- Online entry portal up and ready

For competition details, key dates and the online entry portal visit: www.thecentre.vic.edu.au

In addition to \$800 cash prizes, selected photos and videos submitted to this competition will be used in the Roadmap report and used on DELWP social media.

A big thank you to our cash prize sponsors:

- FRV, developers of [Winton Solar Farm](#)
- Indigo Power, community-owned energy retailer
- Wangaratta Sustainability Network

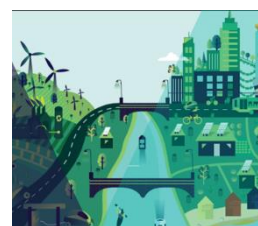
Enter now!

DELWP grants

Community Climate Change Adaptation (3CA) Grants NOW CLOSED

The Victorian Government has \$1 million in grants to fund projects to support communities in Victoria's regions to adapt to the impacts of climate change. Eligible projects can apply for between \$25,000 and \$75,000.

Grants are now closed, and successful applicants will be notified May 2019.



Visit the Roadmap webpage

Our [Roadmap webpage](#) is now live! Visit for roadmap project details, catch up on previous newsletters and to view an inspiring video capturing the community forums held last year. We will continue to add to the webpage so keep visiting.

For further information please contact:

Tom Brown (Project Manager): 0436 611 935 HumeRenewableEnergy.Roadmap@delwp.vic.gov.au
If you no longer wish to receive this newsletter please email us with UNSUBSCRIBE as the subject.



Hume Renewable Energy Roadmap | Hume Region

Forest, Fire and Regions | Department of Environment, Land, Water and Planning

delwp.vic.gov.au

